

Northeast Region High School Art Show

Duchesne School District, Union High School- April 23, 2019



Special Thanks to our Sponsors:

- ▶ Utah Valley University (UVU)
- ▶ Duchesne County School District, Union High School
- ▶ Utah State Board of Education (USBE)
- ▶ Utah Art Education Association (UAEA)
- ▶ Northeastern Utah Educational Services (NUES)



Art Show Awards

The background features abstract, overlapping geometric shapes in various shades of green, ranging from light lime to dark forest green. These shapes are primarily located on the left and right sides of the frame, leaving a large white central area. The shapes are layered, creating a sense of depth and movement.

3D

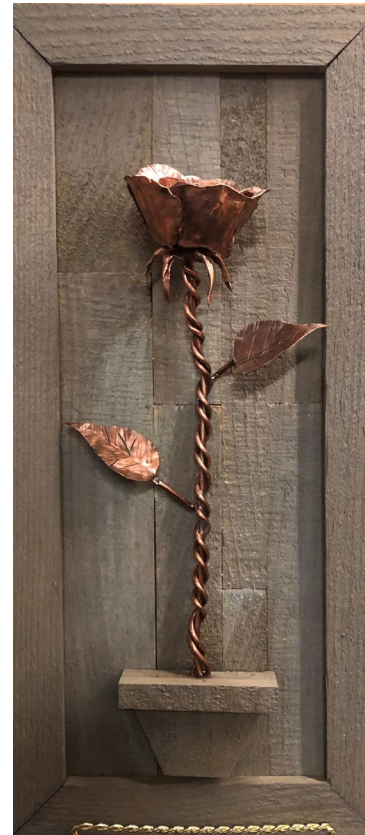
Honorable Mention:

Suzanna Stegelmeier, Morgan High School -

“Slaughter at the Noon-Day Meal”

Heyden Winn, Morgan High School -

“What She Was”



3rd Place:

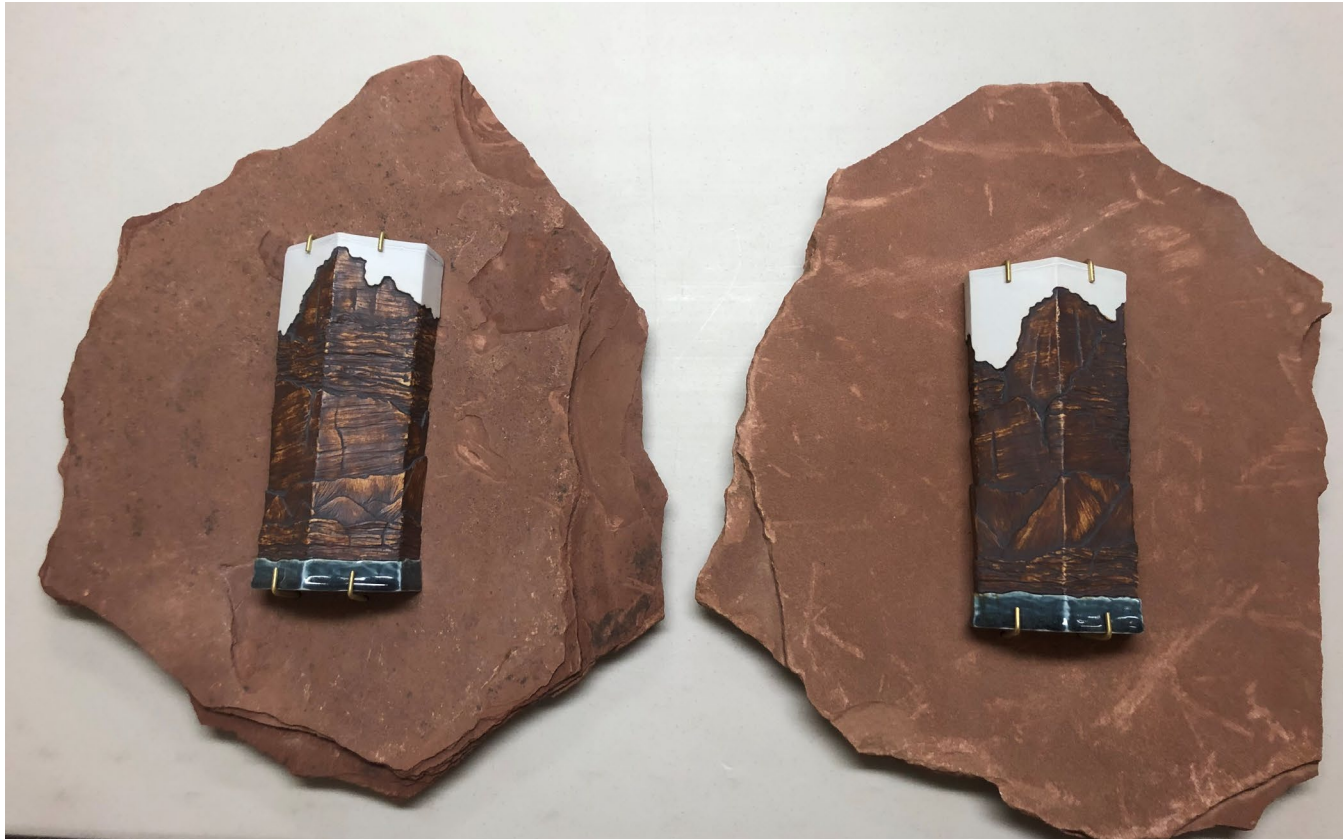
Howard Lund, Daggett

High School-“Rocky Mountain Dragon”



2nd Place:

Suzanna Stegelmeier, Morgan
High School-“The Grand”



1st Place:

Bryson Gunn,

Morgan High School-“Pocket Twins”

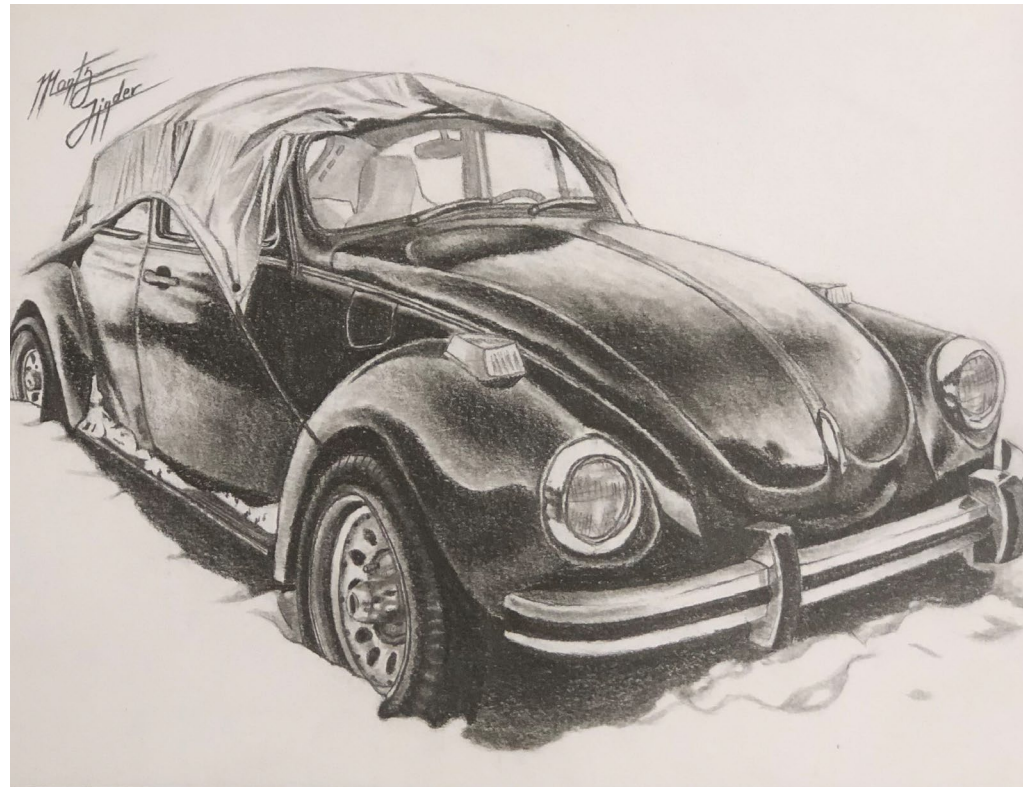
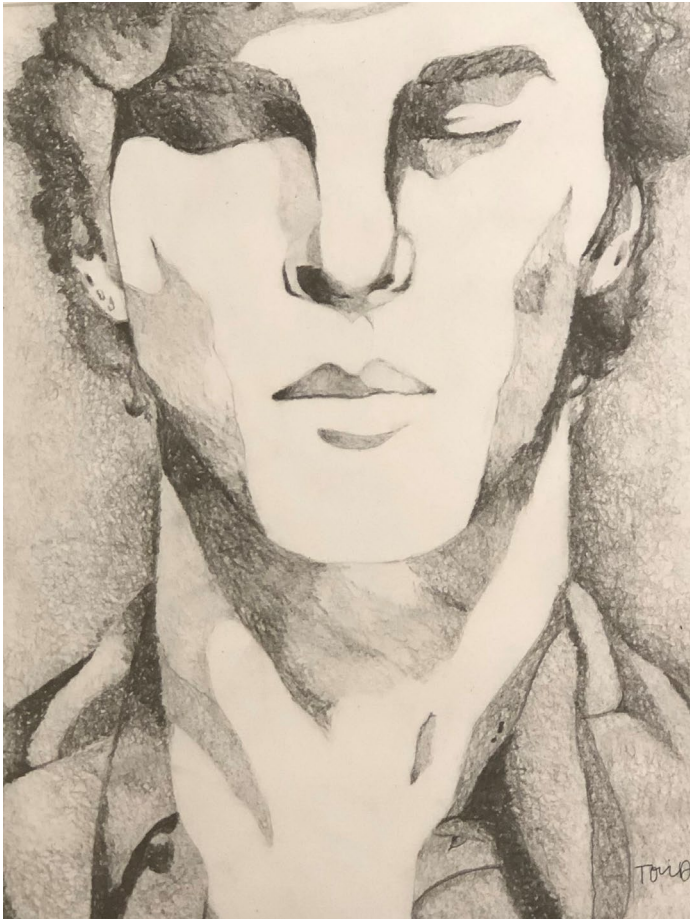


Black and White Drawing

Honorable Mention:

Tori Dorius, Wasatch High School - “Dr. Strange”

Monty Linder, Wasatch High School - “The Bug”



3rd Place:

Kelsey Crane,

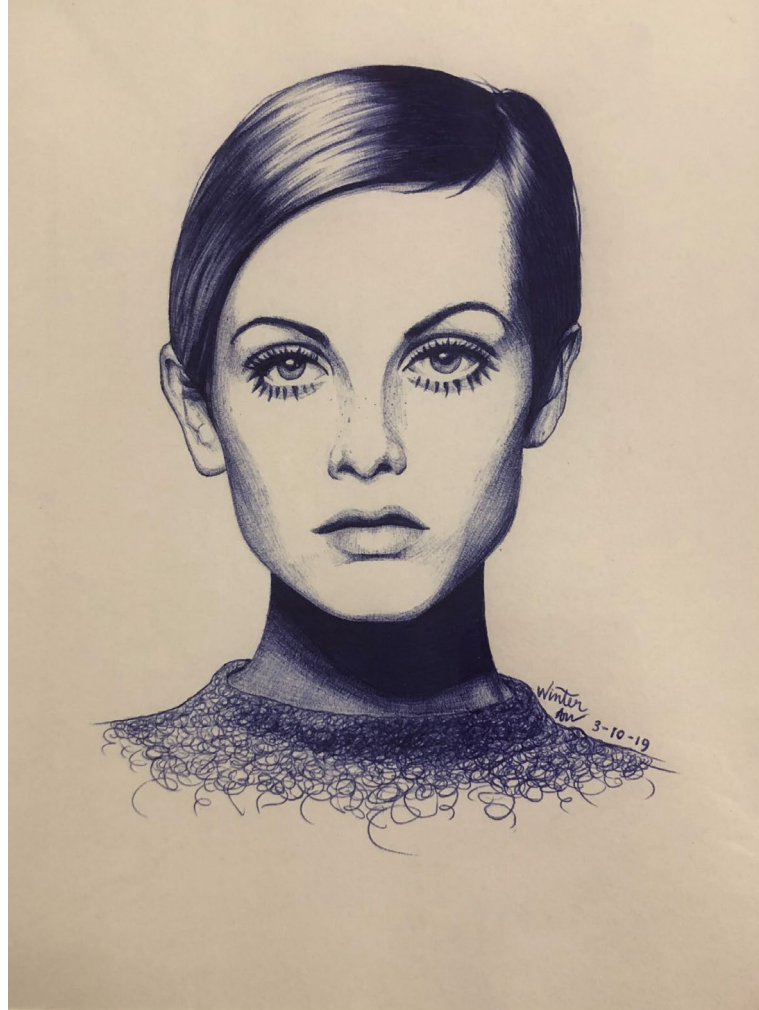
Wasatch High School-“Totally Tubular”



2nd Place:

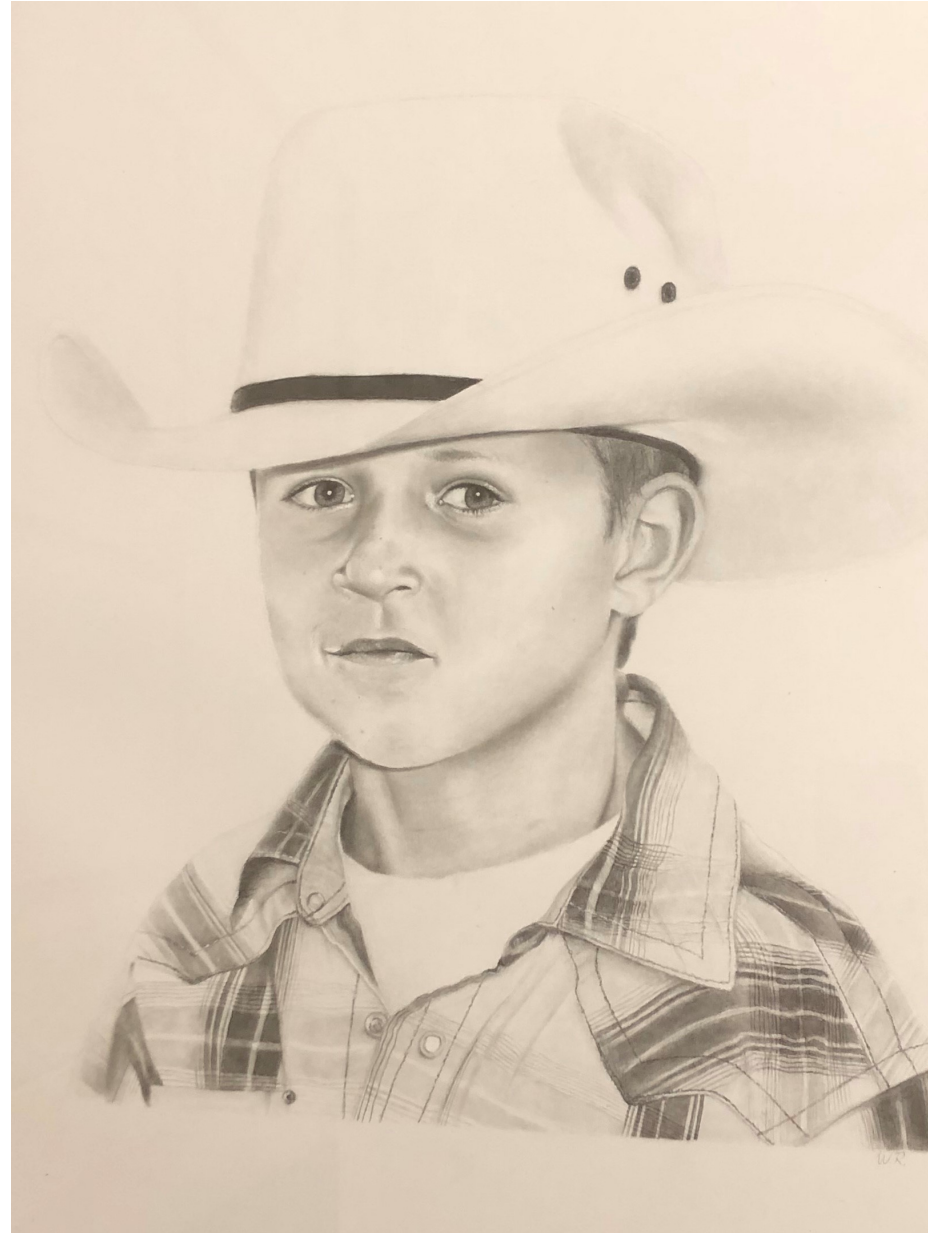
Winter Ashurst, Wasatch High School

“Twiggy”



1st Place:

Wyatt Richards,
Union High School
“Jaxon”



Digital Media

Honorable Mention:

Caden Merrill, Wasatch High School-
“Sixth Planet, First Choice”



3rd Place:
Jayde Moon,
Duchesne High School- “Tradition”




2nd Place:

Lily Jarvis, Wasatch High School -
“Mother Nature”



1st Place:
Jayde Moon,
Duchesne
High School
“Delicate Arch”

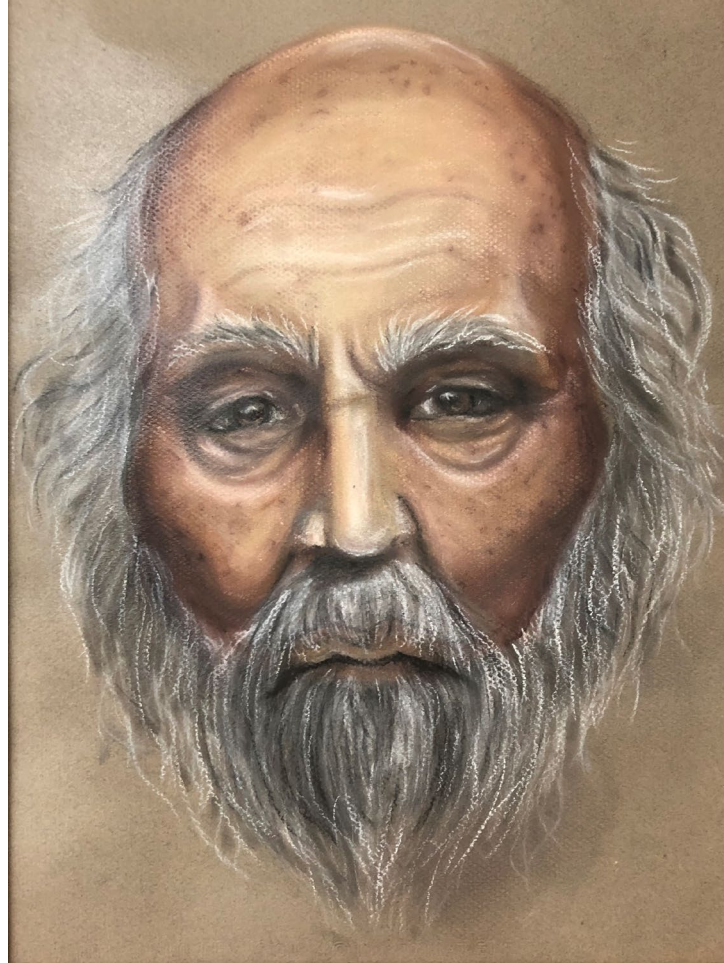


The background features abstract, overlapping geometric shapes in various shades of green, ranging from light lime to dark forest green. These shapes are primarily located on the left and right sides of the frame, creating a modern, layered effect. The central area is a plain white background where the text is placed.

Mixed / Misc. Media

Honorable Mention:

Trinity Drabner, South Summit High School - “Elder”



3rd Place:

Brytan Haggeman,
Duchesne High School-
“Under the Sea”



2nd Place:

Taylor Pippert, Union High School -
“Overwhelming Thoughts”



1st Place:

Quincy Olney, Wasatch High School-
“Insidious”



The background features abstract, overlapping geometric shapes in various shades of green, ranging from light lime to dark forest green. These shapes are primarily located on the left and right sides of the frame, creating a modern, layered effect. The central area is a plain white background where the text is placed.

Paint: Oil / Acrylic

Honorable Mention:

Robin Duke, Wasatch High School - “Lucid Drinking”

Katelyn Weilenmann, Wasatch High School - “Maasai Standing”



3rd Place:

Kaylee Miller, Terra Academy-
“Rhythm”



2nd Place:

Maddalena Willis,

Wasatch High School - “Roger Taylor”



1st Place:

Kendall Walker,

Wasatch High School - “Willow”



The background features abstract, overlapping geometric shapes in various shades of green, ranging from light lime to dark forest green. These shapes are primarily located on the left and right sides of the frame, creating a modern, layered effect. The central area is a plain white background where the text is placed.

Paint: Watercolor

Honorable Mention:

Brytan Haggerman, Duchesne High School - "Bryleigh"

Christina Hogge, Union High School - "Eyeball"



3rd Place:

Rebecca Mathis,
Wasatch High School-
“Natural Beauty”



2nd Place:
Brisa Clayton,
Wasatch High School - “Silent Agony”



1st Place:

Emma Berg,
Wasatch High School-
“Mother Nurture”



Photography

Honorable Mention:

Hailey Pesner, Wasatch High School - "Spectrum"



3rd Place:

Kaydence Rhoads, South Summit
High School - “Reflected Sky”



2nd Place:

Hailey Pesner, Wasatch High School-
“Tremor”



1st Place:


Duncan Slagowski,
Wasatch High School-
“Trapped in the Void”



Director's Choice:

Skyler Moore, Silver Summit Academy -
“Projected City”



The background features abstract, overlapping geometric shapes in various shades of green, ranging from light lime to dark forest green. These shapes are primarily located on the left and right sides of the frame, creating a modern, layered effect. The central area is a plain white background where the text is placed.

2019 Best of Show



Bryson Gunn Morgan High School

“Life Itself”



Thank you, students and
teachers for sharing your
talents with us!

